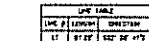
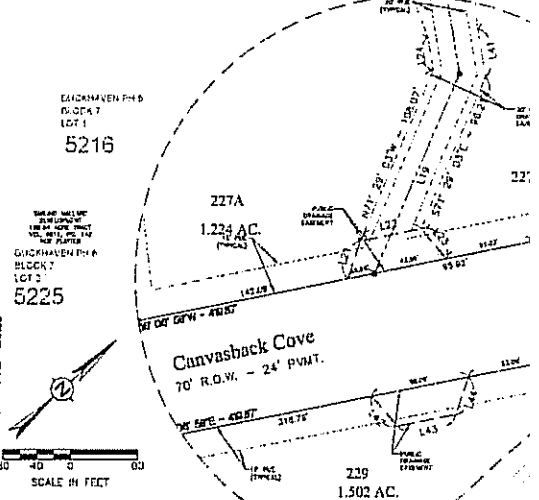


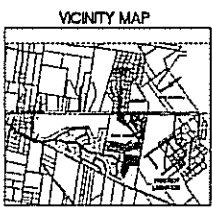
- NOTES:
1. EXAMINE THESE NOTES IN CONNECTION WITH THE MAP AND THE RECORDS OF THE PROJECT.
  2. NO PART OF THIS TRACT IS TO BE USED FOR ANY PURPOSES OTHER THAN THOSE SET FORTH IN THE PLAT.
  3. ALL LOTS ARE TO BE CONVEYED TO THE GRANTEE BY DEED.
  4. ALL LOTS ARE TO BE CONVEYED TO THE GRANTEE BY DEED.
  5. THE GRANTEE SHALL BE RESPONSIBLE FOR THE PROTECTION OF THE PUBLIC INTERESTS IN THE PROJECT.
  6. THE GRANTEE SHALL BE RESPONSIBLE FOR THE PROTECTION OF THE PUBLIC INTERESTS IN THE PROJECT.
  7. THE GRANTEE SHALL BE RESPONSIBLE FOR THE PROTECTION OF THE PUBLIC INTERESTS IN THE PROJECT.
  8. THE GRANTEE SHALL BE RESPONSIBLE FOR THE PROTECTION OF THE PUBLIC INTERESTS IN THE PROJECT.
  9. THE GRANTEE SHALL BE RESPONSIBLE FOR THE PROTECTION OF THE PUBLIC INTERESTS IN THE PROJECT.
  10. THE GRANTEE SHALL BE RESPONSIBLE FOR THE PROTECTION OF THE PUBLIC INTERESTS IN THE PROJECT.
  11. THE GRANTEE SHALL BE RESPONSIBLE FOR THE PROTECTION OF THE PUBLIC INTERESTS IN THE PROJECT.
  12. THE GRANTEE SHALL BE RESPONSIBLE FOR THE PROTECTION OF THE PUBLIC INTERESTS IN THE PROJECT.
  13. THE GRANTEE SHALL BE RESPONSIBLE FOR THE PROTECTION OF THE PUBLIC INTERESTS IN THE PROJECT.
  14. THE GRANTEE SHALL BE RESPONSIBLE FOR THE PROTECTION OF THE PUBLIC INTERESTS IN THE PROJECT.
  15. THE GRANTEE SHALL BE RESPONSIBLE FOR THE PROTECTION OF THE PUBLIC INTERESTS IN THE PROJECT.
  16. THE GRANTEE SHALL BE RESPONSIBLE FOR THE PROTECTION OF THE PUBLIC INTERESTS IN THE PROJECT.
  17. THE GRANTEE SHALL BE RESPONSIBLE FOR THE PROTECTION OF THE PUBLIC INTERESTS IN THE PROJECT.
  18. THE GRANTEE SHALL BE RESPONSIBLE FOR THE PROTECTION OF THE PUBLIC INTERESTS IN THE PROJECT.
  19. THE GRANTEE SHALL BE RESPONSIBLE FOR THE PROTECTION OF THE PUBLIC INTERESTS IN THE PROJECT.
  20. THE GRANTEE SHALL BE RESPONSIBLE FOR THE PROTECTION OF THE PUBLIC INTERESTS IN THE PROJECT.
  21. THE GRANTEE SHALL BE RESPONSIBLE FOR THE PROTECTION OF THE PUBLIC INTERESTS IN THE PROJECT.
  22. THE GRANTEE SHALL BE RESPONSIBLE FOR THE PROTECTION OF THE PUBLIC INTERESTS IN THE PROJECT.
  23. THE GRANTEE SHALL BE RESPONSIBLE FOR THE PROTECTION OF THE PUBLIC INTERESTS IN THE PROJECT.
  24. THE GRANTEE SHALL BE RESPONSIBLE FOR THE PROTECTION OF THE PUBLIC INTERESTS IN THE PROJECT.
  25. THE GRANTEE SHALL BE RESPONSIBLE FOR THE PROTECTION OF THE PUBLIC INTERESTS IN THE PROJECT.



LOT TABLE

LOT NO.	ACRES	FRONT FEET	DEPTH FEET	AREA SQ. FT.
1	0.15	150	100	15000
2	0.15	150	100	15000
3	0.15	150	100	15000
4	0.15	150	100	15000
5	0.15	150	100	15000
6	0.15	150	100	15000
7	0.15	150	100	15000
8	0.15	150	100	15000
9	0.15	150	100	15000
10	0.15	150	100	15000
11	0.15	150	100	15000
12	0.15	150	100	15000
13	0.15	150	100	15000
14	0.15	150	100	15000
15	0.15	150	100	15000
16	0.15	150	100	15000
17	0.15	150	100	15000
18	0.15	150	100	15000
19	0.15	150	100	15000
20	0.15	150	100	15000
21	0.15	150	100	15000
22	0.15	150	100	15000
23	0.15	150	100	15000
24	0.15	150	100	15000
25	0.15	150	100	15000
26	0.15	150	100	15000
27	0.15	150	100	15000
28	0.15	150	100	15000
29	0.15	150	100	15000
30	0.15	150	100	15000
31	0.15	150	100	15000
32	0.15	150	100	15000
33	0.15	150	100	15000
34	0.15	150	100	15000
35	0.15	150	100	15000
36	0.15	150	100	15000
37	0.15	150	100	15000
38	0.15	150	100	15000
39	0.15	150	100	15000
40	0.15	150	100	15000
41	0.15	150	100	15000
42	0.15	150	100	15000
43	0.15	150	100	15000
44	0.15	150	100	15000
45	0.15	150	100	15000
46	0.15	150	100	15000
47	0.15	150	100	15000
48	0.15	150	100	15000
49	0.15	150	100	15000
50	0.15	150	100	15000
51	0.15	150	100	15000
52	0.15	150	100	15000
53	0.15	150	100	15000
54	0.15	150	100	15000
55	0.15	150	100	15000
56	0.15	150	100	15000
57	0.15	150	100	15000
58	0.15	150	100	15000
59	0.15	150	100	15000
60	0.15	150	100	15000
61	0.15	150	100	15000
62	0.15	150	100	15000
63	0.15	150	100	15000
64	0.15	150	100	15000
65	0.15	150	100	15000
66	0.15	150	100	15000
67	0.15	150	100	15000
68	0.15	150	100	15000
69	0.15	150	100	15000
70	0.15	150	100	15000
71	0.15	150	100	15000
72	0.15	150	100	15000
73	0.15	150	100	15000
74	0.15	150	100	15000
75	0.15	150	100	15000
76	0.15	150	100	15000
77	0.15	150	100	15000
78	0.15	150	100	15000
79	0.15	150	100	15000
80	0.15	150	100	15000
81	0.15	150	100	15000
82	0.15	150	100	15000
83	0.15	150	100	15000
84	0.15	150	100	15000
85	0.15	150	100	15000
86	0.15	150	100	15000
87	0.15	150	100	15000
88	0.15	150	100	15000
89	0.15	150	100	15000
90	0.15	150	100	15000
91	0.15	150	100	15000
92	0.15	150	100	15000
93	0.15	150	100	15000
94	0.15	150	100	15000
95	0.15	150	100	15000
96	0.15	150	100	15000
97	0.15	150	100	15000
98	0.15	150	100	15000
99	0.15	150	100	15000
100	0.15	150	100	15000

**FINAL SADDLE CREEK PHASE I**  
 34.025 AC  
 10 LOT  
 BLOCK 10, LOTS 224, 225,  
 BLOCK 11, LOTS 222-226  
 BLOCK 12, LOT  
 JAMES C. STUTEVILLE  
 COLLEGE STATION, BRAZ  
 SCALE: 1"=80'  
 OWNER/DEVELOPER:  
 JAMES C. STUTEVILLE  
 12400 W. 27th Ave.  
 Suite 200  
 Denver, CO 80231  
 (303) 499-1442



**LEGEND**  
 (DOTTED) PLAT BOUNDARY  
 (SOLID) LOT BOUNDARY  
 (DASHED) RIGHT-OF-WAY LINE  
 (THICK SOLID) PUBLIC UTILITY LOCATION  
 (THIN SOLID) EXISTING SIDEWALK  
 (THIN DASHED) PROPOSED SIDEWALK  
 (THIN DOTTED) DRAINAGE AND SEWER LOCATION  
 (THIN SOLID) PHASE LINE  
 (CIRCLE) PROPERTY CORNER

**NOTICE**  
 MAJESTIC OAK CT 5300-5399  
 SADDLE CREEK, OR 97025-1519  
 CANVASBACK COVE 5300-5399

**CERTIFICATE OF OWNERSHIP AND DESIGNATION**  
 STATE OF OREGON  
 COUNTY OF CLATSOP

**CERTIFICATE OF SURVEY**  
 STATE OF OREGON  
 COUNTY OF CLATSOP

**CERTIFICATE OF COUNTY CLERK**  
 STATE OF OREGON  
 COUNTY OF CLATSOP

**CERTIFICATE OF CITY CLERK**  
 CITY OF GAITHERVILLE, OREGON

**CERTIFICATE OF PLANNING AND ZONING EDUCATION**  
 CITY OF GAITHERVILLE, OREGON

**CERTIFICATE OF CITY ENGINEER**  
 CITY OF GAITHERVILLE, OREGON